



Bushings & molded parts

Groz-Beckert specializes in manufacturing highly accurate precision parts made from tungsten carbide, ceramics and steel – and has for over 20 years.

In addition to the production of high-precision parts, Groz-Beckert also specializes in manufacturing high-precision small bores – where high demands are placed on concentricity and radial run out. In addition to tungsten carbide, other materials such as steel and ceramic can also be machined. The application fields are varied and include the electric and lighting industry, as well as printing and dosing technology, wire machining, punching and tool as well as machine shop.

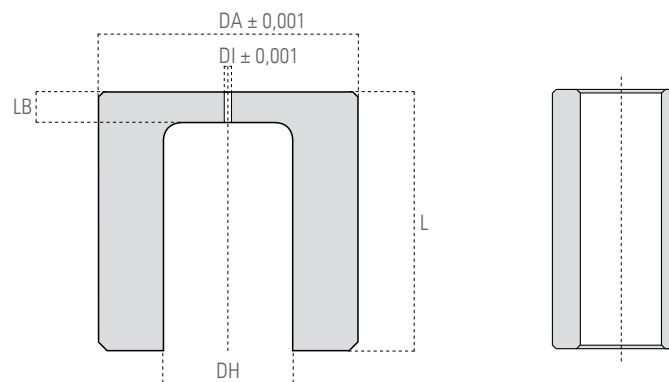
With the support of development, process engineering and laboratory as early as the product development phase, Groz-Beckert can map out the entire process from the idea to the manufacture of the product.



GROZ-BECKERT®

Groz-Beckert KG

Parkweg 2, 72458 Albstadt, Germany
Phone +49 7431 10-0, Fax +49 7431 10-2777
contact-cpc@groz-beckert.com
www.groz-beckert.com



External diameter	DE	1–13 mm
Internal diameter	DI	0.030–10 mm
Radial run out		0.001 mm
Concentricity		0.002 mm
Finish quality drilled hole	Rz	0.2–0.6
Quantities		1–1000
Material		tungsten carbide, ceramic, (steel), powder metallurgical steel

L, LB and DH according to customer requirement

The above values may deviate with specific dimensions. Further dimensions, tolerances and materials are available on request.



High-precision internal and external machining



Mixing nozzle with two channels



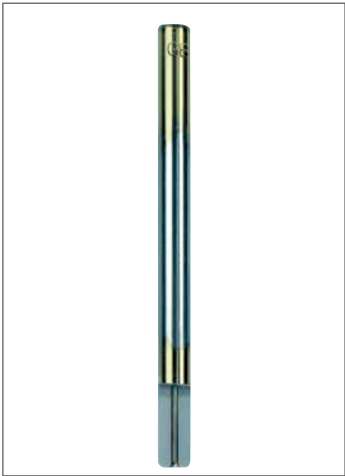
Polished radii and chamfers



Special shapes to meet customer requirements



Guide insert



High length/diameter ratio



High-precision guide systems



Guide bush with cutting surface